



FOR IMMEDIATE RELEASE
December 16, 2011

National Contact:

DORI NIELSEN, Conference Manager
National Council on Education for the Ceramic Arts
dori@nceca.net

Seattle Contact:

MARGE LEVY, NCECA Board Member and On-site Conference Liaison, Seattle
margelevy@comcast.net

**NATIONAL COUNCIL ON EDUCATION FOR THE CERAMIC ARTS (NCECA) LAUNCHES PROGRAMMING
SURROUNDING 46TH ANNUAL CONFERENCE IN SEATTLE**

On the Edge Fills Eyes and Venues throughout Seattle Region with Global Perspectives on Ceramic Art

The National Council on Education for the Ceramic Arts (NCECA) is delighted to share news about its 46th Annual Conference taking place March 28-31, 2012 at the Washington State Convention Center in Seattle, Washington. The conference's theme, ***On the Edge*** was developed especially for the Seattle/ Pacific-Northwest region where more than 170 related exhibitions will be sited. The event is expected to draw nearly 5000 registrants, predominantly artists, educators, collectors, non-profit organizations, schools and enthusiasts. Thousands of additional visitors are likely to travel to the region to visit exhibitions and events surrounding the central conference programming. Along with the conference will come many opportunities for area residents and visitors to experience the transformative and continually evolving influences of one of our most ancient and pervasive art forms.

About NCECA

The National Council on Education for the Ceramic Arts is a dynamic organization that fosters global education and appreciation for the ceramic arts. NCECA's programs, exhibitions, publications, opportunities and resources inspire advancement of the field. NCECA promotes and improves the ceramic arts through education, community-building, research and creative inspiration. NCECA offers programs, events and publications to support its membership of artists, educators, students, individual and corporate art patrons, gallery owners, museum curators and providers of ceramic arts-related products and services. NCECA is the leading organization operating in the US dedicated to a global perspective on ceramic arts and education.

For more information on background on NCECA, the conference programming, presenters, events and exhibitions visit www.nceca.net contact the NCECA office by phone at 1-866-266-2322.

2012 NCECA Exhibition Highlights in the Seattle Region

Not since Genesis . . . has there been so much creativity in six days, most of it in clay!

View 30 independent exhibitions at the Seattle Design Center, March 26-31, 2012, 9 am to 5 pm, free parking and admission.

Each exhibition individually presented by international and nationally recognized curators. Diverse perspectives, dimensions, and delights... Sculpture, installations, pottery, tiles. Featuring Well Served, full table tops of dining ware by top US designers.

Exhibitions sponsored by Hines and the Paul G. Allen Family Foundation. Additional support from the National Endowment for the Arts, Pottery Northwest, Windgate Charitable Foundation, Art Exhibition Services, and Seattle Design Center

Not since the Seattle mud flats . . . has so much clay been everywhere for a whole month!

In March 2012, throughout the Northwest, see ceramics in 175 exhibitions. Sculpture, narratives, installations, collaborations, educational showcases, theme shows, studio production, pottery, and works in clay by kids in museums, galleries, studios, colleges, and universities.

Not since the last flower show. . . has there been so much color at the Washington State Convention Center

January 26 - April 9, 2012: Ceramic Collection of Jim Kolva and Pat Sullivan and Ceramics in the Seattle Portable Works Collection, and Drawings by Ceramic Artists

Wednesday, March 28 – Friday March 30, 2012: Galleries from far and wide bring new ceramic work to Seattle at NCECA EXPO and award winning NCECA EMERGING ARTISTS and showcase of edgy projects in clay, created while you watch at NCECA PROJECT SPACE

Never before . . .

Push Play: The 2012 NCECA Invitational showcases over 30 international artists who explore how the act of play effortlessly expands human potential. Both in life and in art, play is not just about fun and games. It also teaches essential skills, contributing to healthy, well-balanced lives through the sure pleasure of participation. Not relegated to the world of children, it continues to cultivate enlightenment and enjoyment through informed, creative activity into maturity.

The exhibition will be on view at Bellevue Arts Museum from **January 19 - June 17, 2012**.
A special reception takes place 6- 9 pm, Thursday, March 29, 2012, at Bellevue Arts Museum.
Visit www.bellevuearts.org for details.

Sample Images and story ideas



Beth Cavener Stichter working on *Come Undone*, for ***Push Play: The 2012 NCECA Invitational*** showcasing work by more than 30 international artists at Bellevue Arts Museum from **January 19 - June 17, 2012**. The artist lives in Garfield, Washington.

Push Play explores play from multiple perspectives: the creative process, viewer engagement and subject matter as well as exploring the subject of play in developing personality, gender identification and roles, moral and ethical standards, interpersonal relationships, social roles and education.

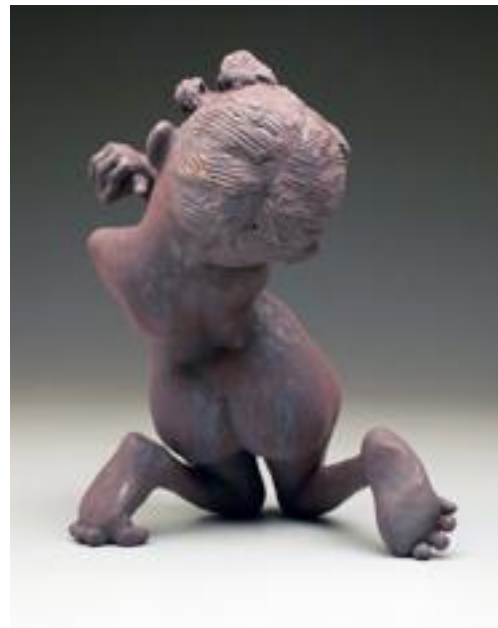
The ***Push Play*** exhibition will be held in conjunction with the 46th National Council on Education for the Ceramic Arts (NCECA) Conference in Seattle, WA (March 28 - 31, 2012). "We are honored to be the hosting venue for the NCECA Invitational," says Stefano Catalani, BAM's Director of Curatorial Affairs/Artistic Director and co-curator of ***Push Play***. "Ceramic art, traditional or experimental, has deep roots in the Northwest. As a museum dedicated to the exploration of art, craft and design, it plays an integral role in our mission."

On the Edge, the 2012 NCECA Conference theme, interfaces with the investigation explored through ***Push Play*** by searching out and providing a platform for exposure of ceramic art and artists that go beyond the obvious to reveal underlying patterns, challenge preconceptions, expose motivation and enlighten behavior regarding play. Through works of great power, the artists selected push play to new heights of meaning, mystery and relevance.

Images and Selected International Participation



British potter **Walter Keeler** will lead a pre-Conference workshop at Pottery Northwest, March 23 – 25, and participate in the 2012 NCECA Conference as a demonstrating artist. His work, including *Stoneware Watering Can*, will be on view at Pottery Northwest in March.



Lisa the Beggar by **Anne Drew Potter**, 12" tall, ceramic, front and back view, at Pottery Northwest Exhibition in the Seattle Design Center, March 26-31, Suite 254. Anne Drew Potter, currently living in Berlin, Germany is a former resident artist at PNW on leave studying in Germany on a fellowship for a year. Her work is also included in ***Push Play*** at the Bellevue Arts Museum.



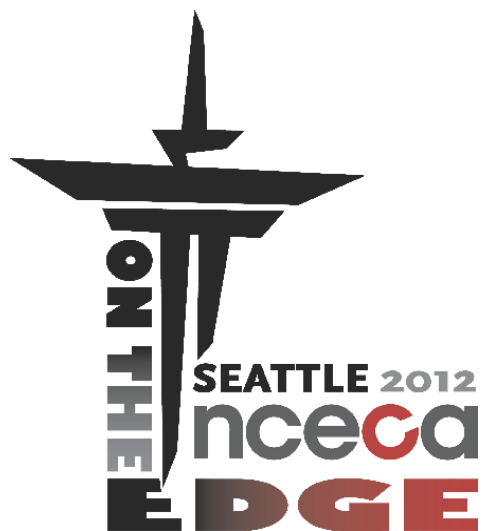
Dogwood Dinner Service by Ben Carter, Educational Director of the Pottery Workshop in Shanghai, China, in show of art made in China, at the Seattle Design Center, March 26-31, Suite 391. He is from the southeast US and brings that regional sensibility to his work while using native clays and glazes from the oldest regions of ceramic expression and materials in the world.



Selections from *The Vase Project: Landscape in Blue*, a collection of 101 porcelain vases painted by Chinese artists, curated by Barbara Diduk and Zhao Yu at the Seattle Design Center, March 26-31, Suite 262 . This exhibition is an artistic version of musical chairs and shows what happens when traditions pass down through generations or 101 artists.

ADDITIONAL FACTS

2012 NCECA Conference Logo and theme



THEME: On the Edge - Seattle, as well as the entire Puget Sound region, is located in a unique geographical position; on the EDGE of the country and on the EDGE of the Pacific Rim. From this location ON THE EDGE, quite naturally, we have a broad perspective on objects, places and issues, and see great distances. We thrive on the intersection of old and new worlds. And we respect distant and historic cultures...Asian, Pacific, Native American, and all of our neighbors in North America. Most of all we appreciate how they have influenced our contemporary ceramic practices.

Through creative stretching, we also visit the EDGE of our imagination and appreciate the artistic use of clay in dynamic new ways. Even EDGY ways...often on the EDGE...sometimes with rough EDGES.

All Exhibition Venues

Bellevue

Bellevue Arts Museum
Bellevue College Gallery

Gunnar Nordstrom Gallery
Hallway Gallery

Bellingham

Allied Arts of Whatcom
County
Good Earth Pottery
Mindport
Western Washington
University

Whatcom Museum

Burien

Moshier Art Center

Edison

The Brick Gallery

Ellensburg

Central Washington

University
Gallery One
Sarah Spurgeon Gallery

Edmonds

Edmonds Arts Commission
Edmonds Arts Festival
Museum

Everett

Everett Community College
Russell Day Gallery
Schaack Art Center

Issaquah

artEast/Upfront Gallery

Lynnwood

Edmond Community College

Kirkland

Kirkland Arts Center
Kirkland Arts Center Store
Parklane Gallery

LaConner

Museum of Northwest Art

Seattle

{far4}
3D4M UW
ACT Theater
Archangel Art Collective
ART/NOT TERMINAL
ArtXchange Gallery
Azuma Gallery
Barnes & Noble
Barney's
Be Luminous Yoga Studio
Catherine Person
Clover House
Davidson Gallery
Eidelauer Picture Club
Facere Jewelry Art Gallery
Fancy
Foster/White Gallery

Fraker/Scott Gallery

Francine Seders Gallery
Friesen Gallery
Frye Art Museum
G. Gibson Gallery
Gage Academy of Art
Gallery 110
Gallery 4 Culture
Gallery IJM|A
Glen Richards
Greg Kucera Gallery
Grover/Thurston Gallery
Harborview Medical Center
Hedreen Gallery at SU
Henry Art Gallery
Hopvine Pub
Jacob Lawrence Gallery at
UW
James Harris Gallery
Jeffrey Moose Gallery

KOBO Gallery at Higo	Patricia Rovzar Gallery	Slab Art	Shoreline Community
Laguna Pottery	Paul D. McKee Studio	SOIL	College Art Gallery
Lawrimore Project	Platform Gallery	St. James Cathedral	Tacoma
Linda Hodges Gallery	POTS Galleries	Suyama Space	Clay Art Center
Lisa Harris Gallery	Pottery Northwest	The Firm	Fulcrum Gallery
Lundgren Monuments	Pratt Fine Arts Gallery	The Piranha Shop	Museum of Glass
Boutique	Punch Gallery	TK Angle Gallery	Pacific Lutheran University
Millstream	Salty Dog Studios	Traver Gallery	Tacoma Art Museum
Mithun Architects	SAM Gallery	Twilight Artist Collective	Tacoma Community College
Nordic Heritage Museum	SAM Shop	Volunteer Park Conservatory	Gallery
Nordstrom	Scraps Dog Bakery	WA State Convention Center	Traver Gallery
North Seattle Community	SeaTac Airport	Whole Foods	The Art Stop
College	Seattle Design Center	Stanwood	Throwing Mud Gallery
Northwest Fine Woodworking	Seattle Art Museum	Pilchuck Glass School	University of Puget Sound
Olympic Sculpture Park	Seattle Asian Art Museum	Stanwood House Gallery &	Kittredge Gallery
Pacini Lubel Gallery	Seattle Pottery Supply	Art Center	
Paper Hammer	Shift Collaborative Studio	Shoreline	
Patricia Cameron Gallery	Sisko Gallery		

Museum Venues

Bellevue Arts Museum – Push Play	Museum of Northwest Art - Tulipiers – vases for tulips
Frye Art Museum – Taiwan Installation Artist Li Chen	Olympic Sculpture Park
Henry Art Gallery – 20th century ceramics at the UW	Seattle Art Museum – new acquisitions
Museum of Glass – Works in Glass by Artist who usually work in clay...title unknown	Seattle Asian Art Museum - old acquisitions on view
	Tacoma Art Museum – Hide and Seek and works by Howard Kottler
	Whatcom Museum - Contemporary Israeli Ceramics